

## Via Local - Rua Brasília

Luminária: 30 w  
Altura: 7 m  
Distância entre Postes: 30 m  
Via: 8 m  
Calçada: 1,5 m  
Braço: 2 m

Rua/Av.: Rua Brasília  
Classificação de Via/Lux: V5 / 5 lx  
Classificação de Calçada/Lux: P4 / 3 lx

Date: 09.04.2015  
Operator:

Operator  
Telephone  
Fax  
e-Mail

## Table of contents

---

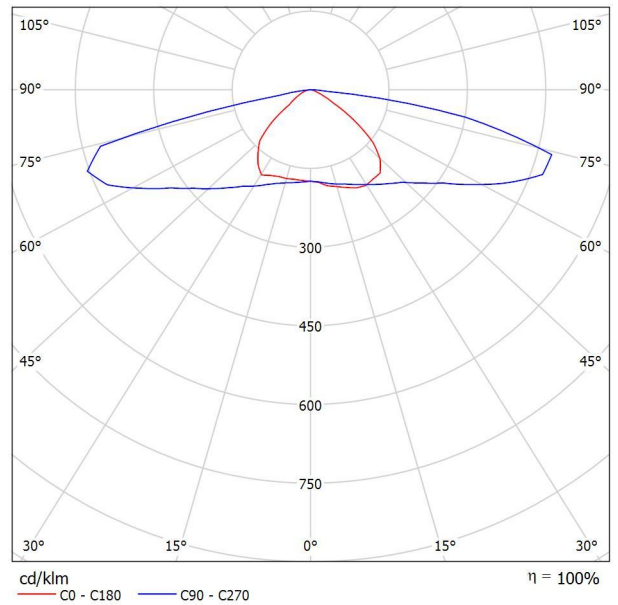
<b>Via Local - Rua Brasília</b>	
Project Cover	1
Table of contents	2
<b>Luminária 30W</b>	
Luminaire Data Sheet	3
<b>Projeto Luminotécnico</b>	
Planning data	4
Photometric Results	5
3D Rendering	7
False Colour Rendering	8
<b>Valuation Fields</b>	
<b>Via</b>	
Value Chart (E)	9
<b>Observer</b>	
<b>Observador 1</b>	
Isolines (L)	10
<b>Observador 2</b>	
Isolines (L)	11
<b>Calçada Oposta</b>	
Value Chart (E)	12
<b>Calçada</b>	
Value Chart (E)	13

Operator  
Telephone  
Fax  
e-Mail

## Luminária 30W / Luminaire Data Sheet

See our luminaire catalog for an image of the luminaire.

Luminous emittance 1:



Luminaire classification according to CIE: 100  
CIE flux code: 32 66 93 100 100

Due to missing symmetry properties, no UGR table can be displayed for this luminaire.

Operator  
Telephone  
Fax  
e-Mail

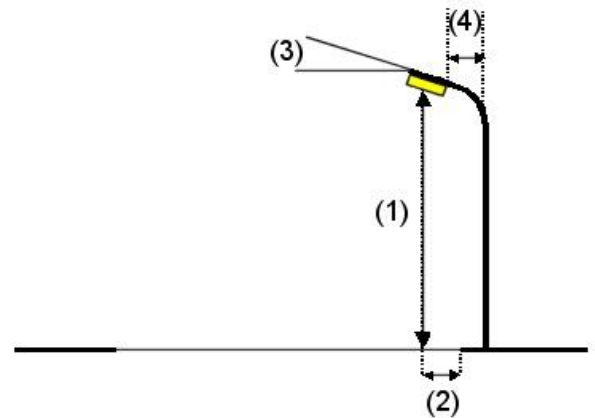
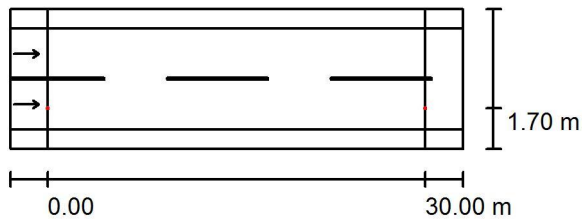
## Projeto Luminotécnico / Planning data

### Street Profile

Calçada Oposta	(Width: 1.500 m)
Via	(Width: 8.000 m, Number of lanes: 2, tarmac: R3, q0: 0.070)
Calçada	(Width: 1.500 m)

Maintenance factor: 1.00

### Luminaire Arrangements



Luminaire:	Luminária 30W
Luminous flux (Luminaire):	2463 lm
Luminous flux (Lamps):	2464 lm
Luminaire Wattage:	30.0 W
Arrangement:	Single row, bottom
Pole Distance:	30.000 m
Mounting Height (1):	7.000 m
Height:	6.900 m
Overhang (2):	1.700 m
Boom Angle (3):	0.0 °
Boom Length (4):	2.000 m

#### Maximum luminous intensities

at 70°:	643 cd/klm
at 80°:	764 cd/klm
at 90°:	13 cd/klm

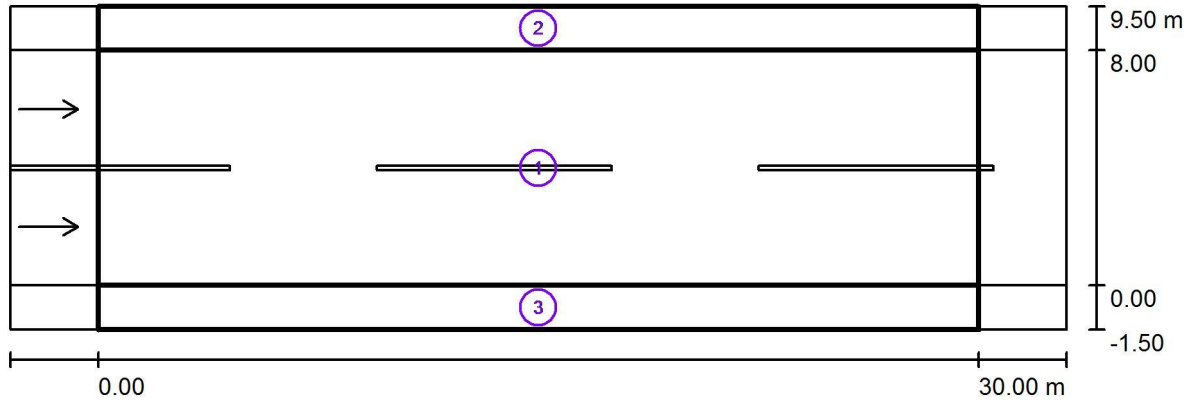
Any direction forming the specified angle from the downward vertical, with the luminaire installed for use.

No luminous intensities above 95°.

Arrangement complies with glare index class D.4.

Operator  
Telephone  
Fax  
e-Mail

## Projeto Luminotécnico / Photometric Results



Maintenance factor: 1.00

Scale 1:258

### Calculation Field List

- 1 Via  
 Length: 30.000 m, Width: 8.000 m  
 Grid: 10 x 6 Points  
 Accompanying Street Elements: Via.  
 tarmac: R3, q0: 0.070  
 Selected Lighting Class: ME4a

(Not all lighting performance requirements are met.)

	$L_{av}$ [cd/m <sup>2</sup> ]	U0	UI	TI [%]	SR
Calculated values:	0.51	0.49	0.75	14	0.64
Required values according to class:	≥ 0.50	≥ 0.40	≥ 0.60	≤ 15	≥ 0.00
Fulfilled/Not fulfilled:	✓	✓	✓	✓	✓

Operator  
Telephone  
Fax  
e-Mail

## Projeto Luminotécnico / Photometric Results

### Calculation Field List

- 2 Calçada Oposta  
Length: 30.000 m, Width: 1.500 m  
Grid: 10 x 3 Points  
Accompanying Street Elements: Calçada Oposta.  
Selected Lighting Class: CE5 (All lighting performance requirements are met.)

	$E_{av}$ [lx]	U0
Calculated values:	3.74	0.76
Required values according to class:	$\geq 3.00$	$\geq 0.20$
Fulfilled/Not fulfilled:	✓	✓

- 3 Calçada  
Length: 30.000 m, Width: 1.500 m  
Grid: 10 x 3 Points  
Accompanying Street Elements: Calçada.  
Selected Lighting Class: CE5 (All lighting performance requirements are met.)

	$E_{av}$ [lx]	U0
Calculated values:	4.84	0.43
Required values according to class:	$\geq 3.00$	$\geq 0.20$
Fulfilled/Not fulfilled:	✓	✓

Operator  
Telephone  
Fax  
e-Mail

**Projeto Luminotécnico / 3D Rendering**



Operator  
Telephone  
Fax  
e-Mail

**Projeto Luminotécnico / False Colour Rendering**

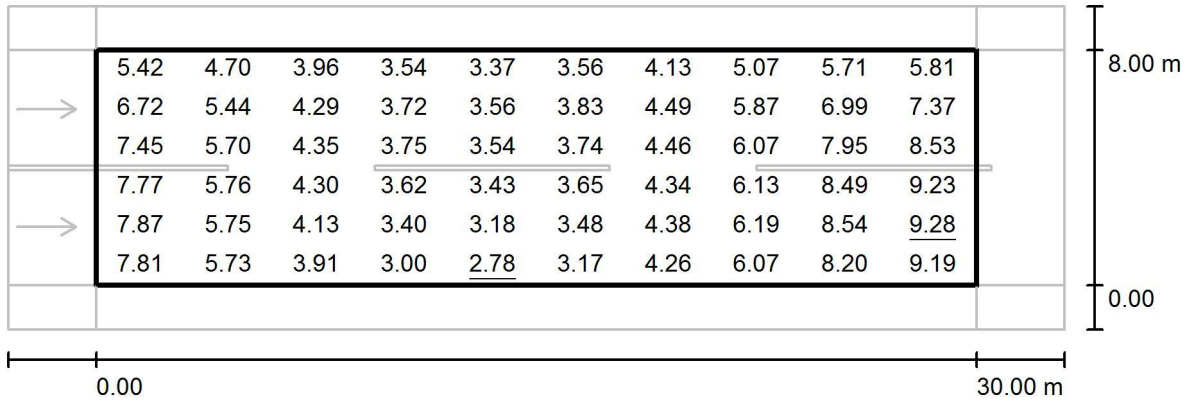


lx



Operator  
Telephone  
Fax  
e-Mail

### Projeto Luminotécnico / Via / Value Chart (E)



Values in Lux, Scale 1 : 258

Grid: 10 x 6 Points

$E_{av}$  [lx]  
5.34

$E_{min}$  [lx]  
2.78

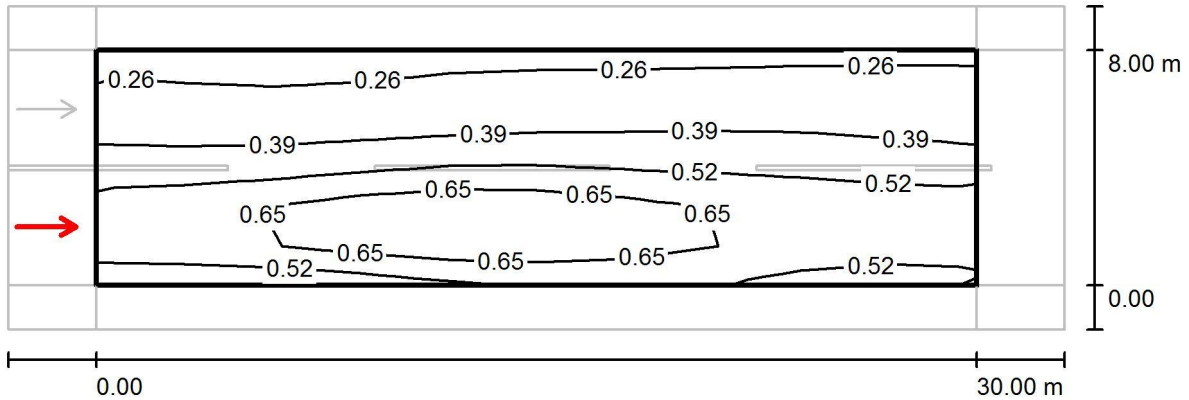
$E_{max}$  [lx]  
9.28

$u_0$   
0.521

$E_{min} / E_{max}$   
0.300

Operator  
Telephone  
Fax  
e-Mail

### Projeto Luminotécnico / Via / Observador 1 / Isolines (L)



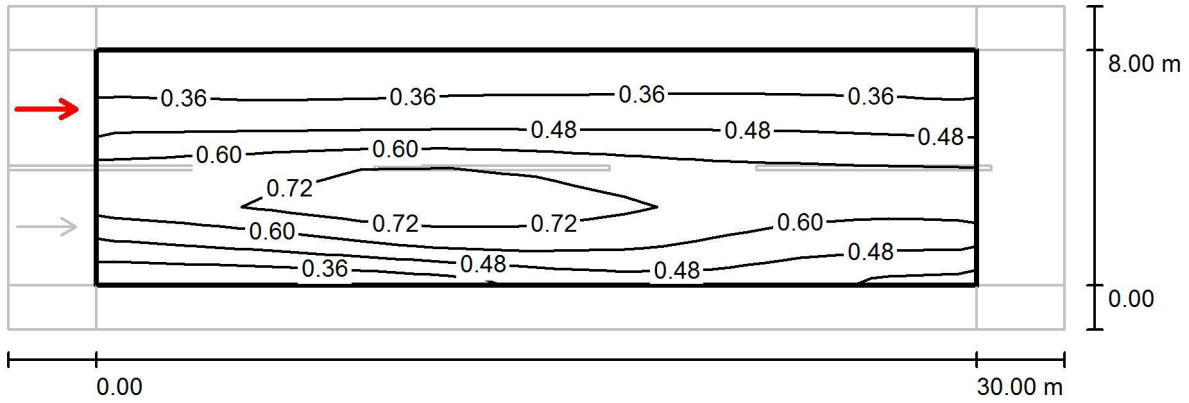
Values in Candela/m², Scale 1 : 258

Grid: 10 x 6 Points  
Observer Position: (-60.000 m, 2.000 m, 1.500 m)  
tarmac: R3, q0: 0.070

	$L_{av}$ [cd/m²]	U0	UI	TI [%]
Calculated values:	0.51	0.49	0.75	14
Required values according to class ME4a:	≥ 0.50	≥ 0.40	≥ 0.60	≤ 15
Fulfilled/Not fulfilled:	✓	✓	✓	✓

Operator  
Telephone  
Fax  
e-Mail

### Projeto Luminotécnico / Via / Observador 2 / Isolines (L)



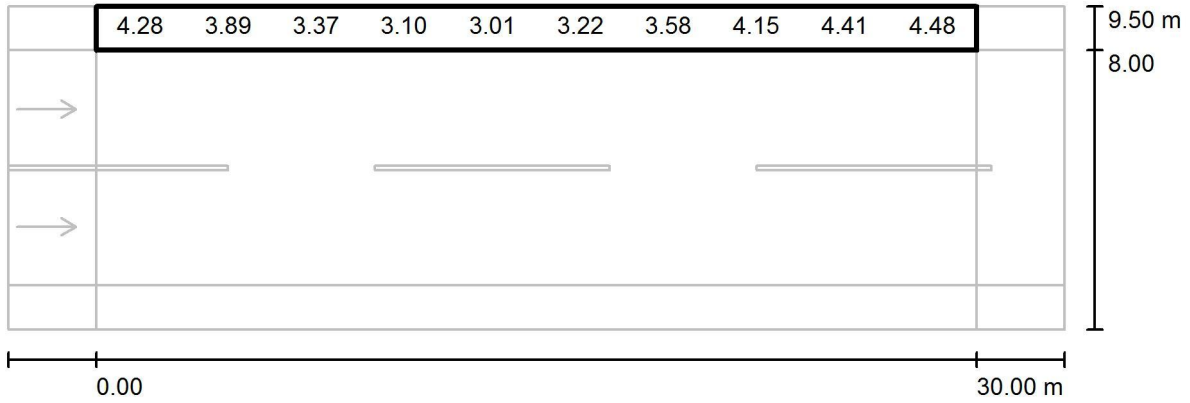
Values in Candela/m<sup>2</sup>, Scale 1 : 258

Grid: 10 x 6 Points  
Observer Position: (-60.000 m, 6.000 m, 1.500 m)  
tarmac: R3, q0: 0.070

	$L_{av}$ [cd/m <sup>2</sup> ]	U0	UI	TI [%]
Calculated values:	0.52	0.51	0.91	13
Required values according to class ME4a:	≥ 0.50	≥ 0.40	≥ 0.60	≤ 15
Fulfilled/Not fulfilled:	✓	✓	✓	✓

Operator  
Telephone  
Fax  
e-Mail

**Projeto Luminotécnico / Calçada Oposta / Value Chart (E)**



Values in Lux, Scale 1 : 258

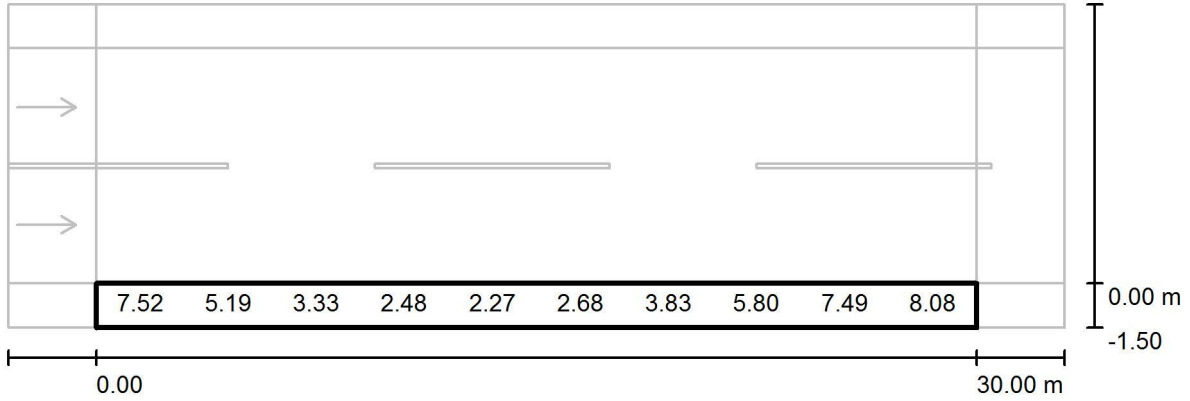
Not all calculated values could be displayed.

Grid: 10 x 3 Points

$E_{av}$ [lx]	$E_{min}$ [lx]	$E_{max}$ [lx]	u0	$E_{min} / E_{max}$
3.74	2.84	4.96	0.760	0.574

Operator  
 Telephone  
 Fax  
 e-Mail

**Projeto Luminotécnico / Calçada / Value Chart (E)**



Values in Lux, Scale 1 : 258

Not all calculated values could be displayed.

Grid: 10 x 3 Points

$E_{av}$ [lx]	$E_{min}$ [lx]	$E_{max}$ [lx]	u0	$E_{min} / E_{max}$
4.84	2.10	8.44	0.433	0.248